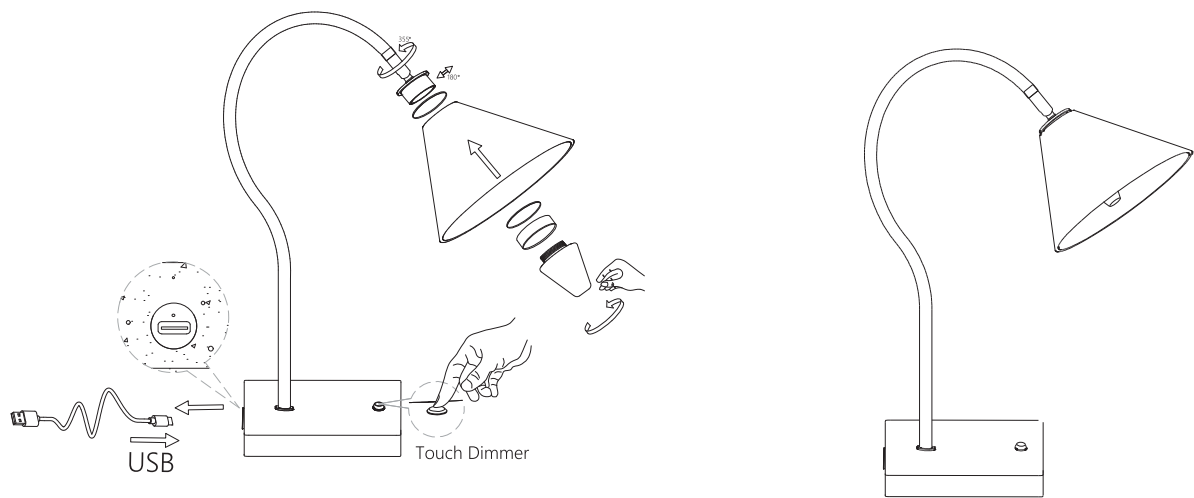


Question

INSTRUCTION MANUAL



Question Jubilee has a 3 step dimming system.

When touching the on/ off icon, the lamp will light up in 3 different light settings. During charging, there is a small indicator next to the USB-C port that will light red. After fully charged, the light indicator becomes green.

Charging time: 3-4 hours

Working time : > 7 hours (depending on what light setting, full light approximately 7 hours)

Please remember in case the lamp has not been used for 2-3 months, that the batteries might need to be recharged.

Material: Metal/ glass/travertine

Use indoor (IP20)

Halo Design Copenhagen
Gammelgårdsvej 85
DK-3520 Farum
Model no.: Question
1.7W DC 5V 50/60Hz LED
2000mAh Battery
IP 20

